

Kegel Recreation Series - EASY STREET - 7938



Oil Pattern Distance:	38 Feet	Reverse Brush Drop:	38 Feet	Oil Per Board:	50 uL
Forward Oil Total:	7.25 mL	Reverse Oil Total:	11.45 mL	Volume Oil Total:	18.7 mL
Forward Boards Crossed:	145 Boards	Reverse Boards Crossed:	229 Boards	Total Boards Crossed:	374 Boards

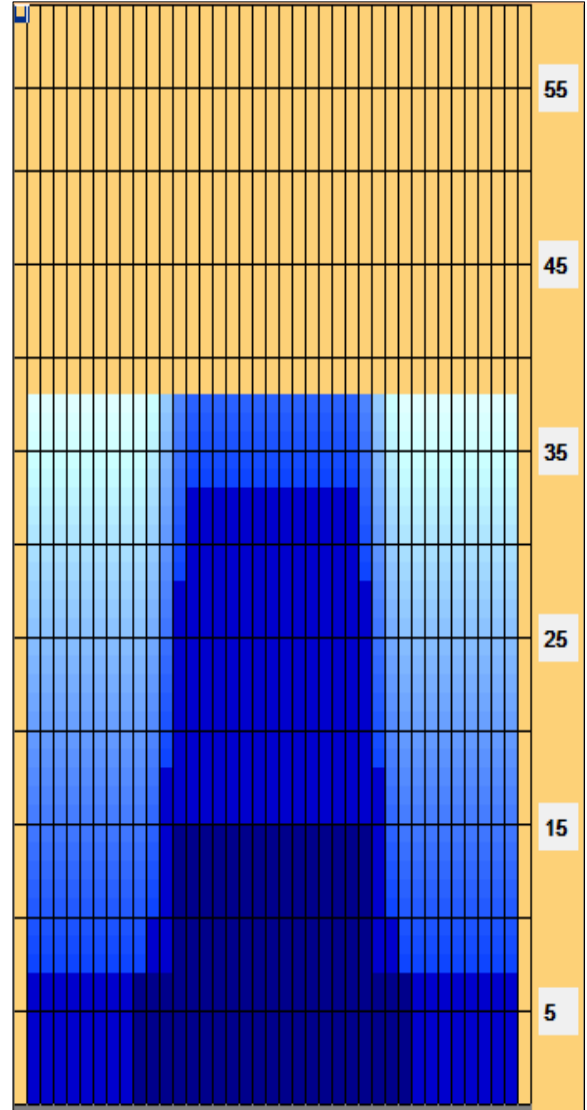
	Start	Stop	Loads	Speed	Crossed	Start	End	Feet	T.Oil
1	2L	2R	1	14	37	0.0	0.0	0.0	1850
2	10L	10R	3	18	63	0.0	7.6	7.6	3150
3	13L	13R	3	18	45	7.6	15.2	7.6	2250
4	2L	2R	0	18	0	15.2	24.0	8.8	0
5	2L	2R	0	22	0	24.0	33.0	9.0	0
6	2L	2R	0	30	0	33.0	38.0	5.0	0

	Start	Stop	Loads	Speed	Crossed	Start	End	Feet	T.Oil
1	2L	2R	0	30	0	38.0	33.0	-5.0	0
2	14L	14R	2	18	26	33.0	27.9	-5.1	1300
3	13L	13R	4	18	60	27.9	17.7	-10.2	3000
4	12L	12R	4	14	68	17.7	9.8	-7.9	3400
5	11L	11R	2	10	38	9.8	7.0	-2.8	1900
6	2L	2R	1	10	37	7.0	5.6	-1.4	1850
7	2L	2R	0	10	0	5.6	0.0	-5.6	0

Conditioner:
Type In or Select One

TransferType:
Type In or Select One

- Forward
- Reverse
- Combined
- Buff



EASY STREET - 7938 Because of the medium distance of this pattern, it is favorable to many different styles and ball choices. Bowlers with higher rev rates can easily swing the ball and bowlers with lower rev rates can play more direct. This pattern is just like walking down EASY STREET with no worries on a nice summer day.

Item	3L-7L:18L-18R	8L-12L:18L-18R	13L-17L:18L-18R	18L-18R:17R-13R	18L-18R:12R-8R	18L-18R:7R-3R
Description	Outside Track:Middle	Middle Track:Middle	Inside Track:Middle	Middle:Inside Track	Middle:Middle Track	Middle:Outside Track
Track Zone Ratio	10	3.7	1.02	1.02	3.7	10

